

# MONUMENT RECORD

Corner I.D. #

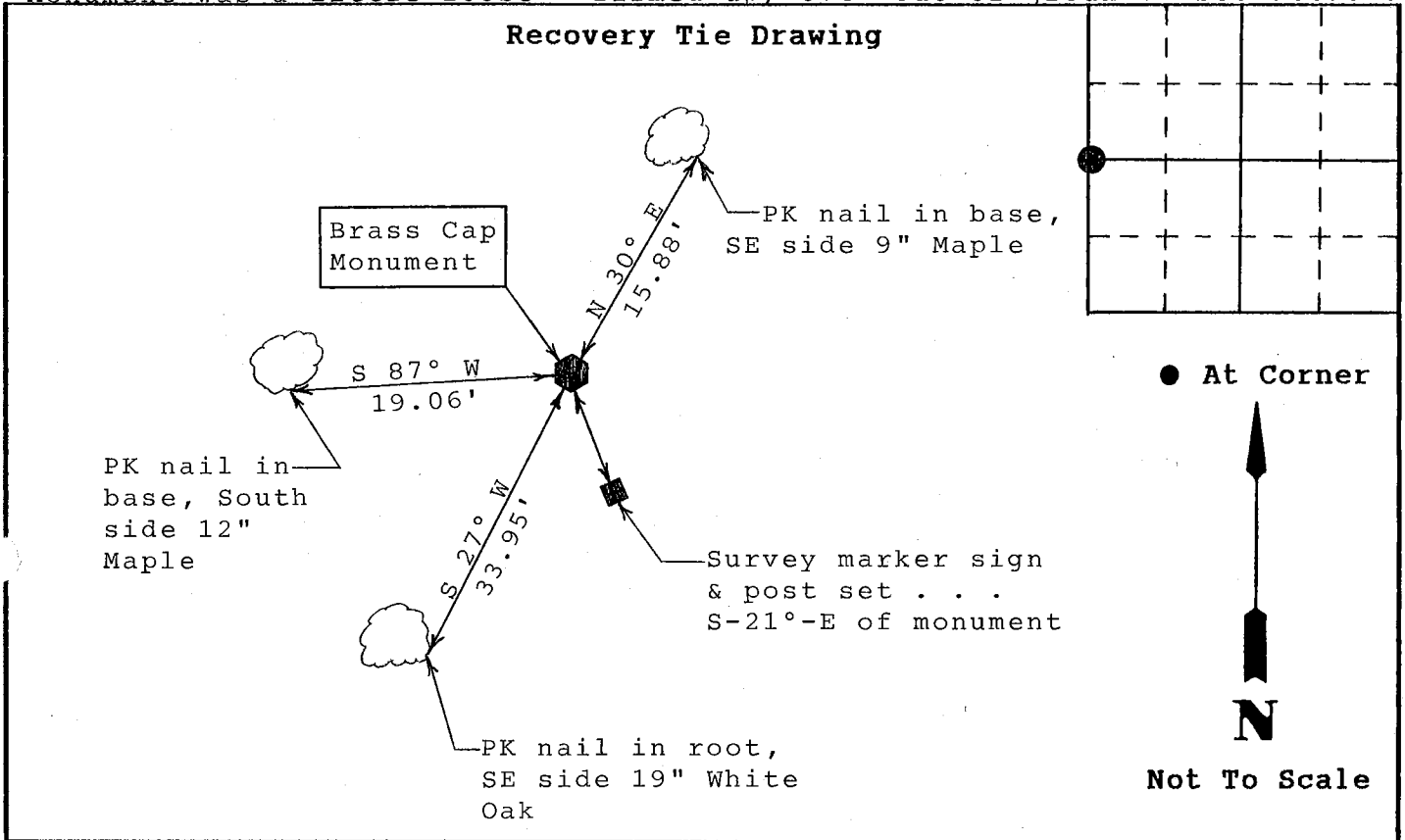
E-15

STATE OF INDIANA - COUNTY OF MONROE

Section Twenty (20), Township 8 North, Range 1 East

Monument Description & Remarks: Brass Cap monument set in concrete found at West 1/4 corner of section. Brass Cap measured 4" diam., concrete 6" diam. Monument was a little loose - firmed up; 0.4' out of ground. See attached.

Recovery Tie Drawing



State of Indiana  
County of Monroe

Space  
Reserved For  
Recording  
Officer

I, Michael Friley, County Surveyor *M.A.F.*, hereby certify that this document was prepared under my direction in accordance with the provisions of Section 17-3-64-4 through 17-3-64-8 of the Indiana Code, being Acts of 1965, Chapter 319; and the above data is given under my hand and seal this 13th day of April, 1995 A.D.

Indiana Registered Land Surveyor No. \_\_\_\_\_ or

Office of Monroe County Surveyor  
United States Government Agency

County Surveyor  
Title

Field Book:

95-01

Page:

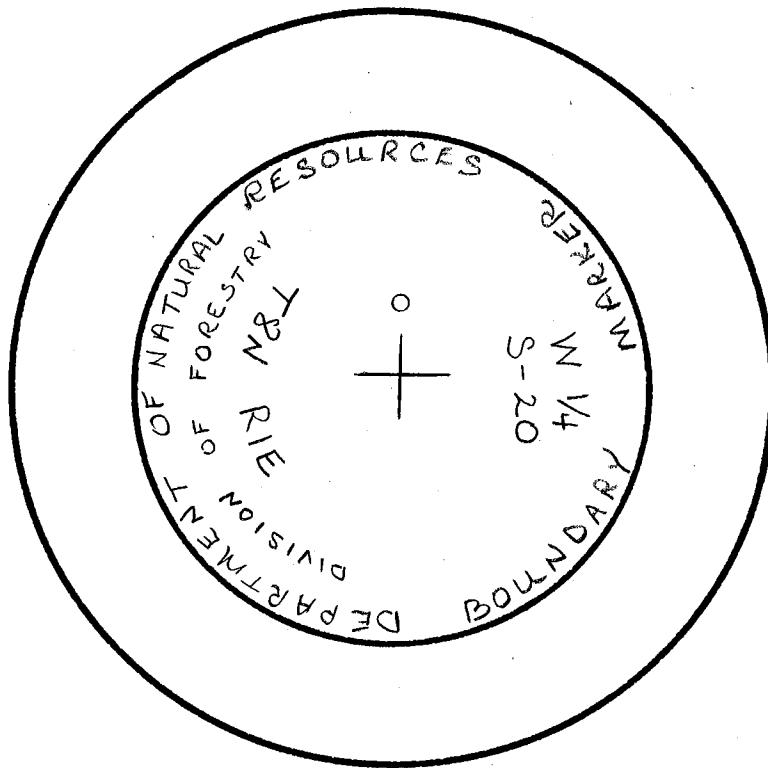
26 & 27

MONUMENT RECORD

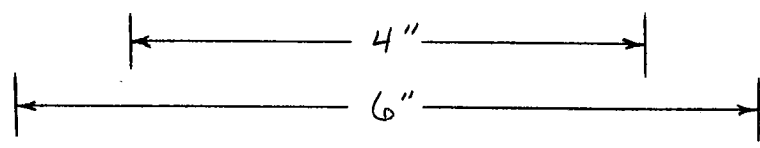
Corner I.D. E-15

Section	<u>20</u>
Township	<u>8 North</u>
Range	<u>1 East</u>

Description: Found Brass Cap monument set in concrete at West 1/4 corner of section. Monument was a little loose - firmed up; 0.4' out of ground. See attached "Recovery Tie Drawing".



Not To Scale



CHECK

CERTIFIED LAND CORNER RESTORATION

State of Indiana )  
                          )SS:  
County of Monroe)

I Stephen L. Smith do hereby certify that on the 27th day of February,  
1986, I found evidence of the W 1/4 corner of Section 20  
Township 8 North, Range 1 East, Second Principal Meridian,  
as described hereon; and that from this evidence I established a new monument and  
accessories as described hereon to perpetuate the original location of this corner;

Description of original monument and accessories and subsequent restorations:

- Original survey by Henrie in 1815, no monument set.
- Subsequent surveys by Spencer in 1864, unknown monument with accessories.
- Survey by Dillman in 1888, stone and accessories.

Description of corner evidence found:

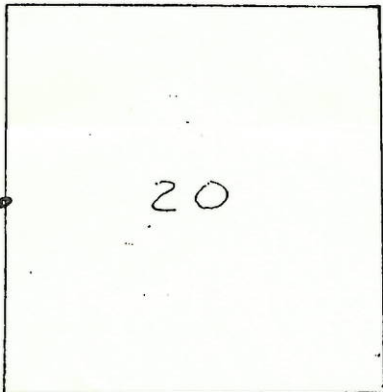
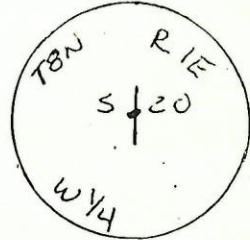
None

Description of monument and accessories I established to perpetuate the original location of this corner:

In February 1986, I set a 6" x 30" long concrete monument with brass disc. Set at prorated distance between W1/16, SW 1/4 and NW corner.

Corner accessories established:

- 1) N 5 W, 10" Maple, 15.7'
- 2) S 0 W, 10" Maple, 11.3'
- 3) S 70 W, 16" Maple, 18.2'



Resident witness Ben Blalock  
Dated at Bloomington Indiana, this 28 day of  
Feb 1986.  
Signature Stephen L. Smith Title Reg. land Surveyor  
(County Surveyor, Registered Land Surveyor, or other duly  
authorized official)

Surveyors Registration No. S0427

Office of \_\_\_\_\_ County \_\_\_\_\_

I hereby certify that the within instrument was filed in this  
office for record on the \_\_\_\_\_ day of \_\_\_\_\_ 19\_\_\_\_,  
and was filed in Book No. \_\_\_\_\_ Page No. \_\_\_\_\_  
of County Records.

Signature \_\_\_\_\_ Title \_\_\_\_\_

Township 8 N, Range 1 E, Section 20, Index No. \_\_\_\_\_, Page No. \_\_\_\_\_